



## Position description

<b>Position title</b>	<i>Project Engineer</i>
<b>Group / Branch</b>	<i>Liveable Water Solutions / Asset Program Delivery</i>
<b>Reports to (Title)</b>	<i>Growth Delivery Team leader</i>
<b>Competency level</b>	<b>Individual Contributor</b>

## Job Purpose

The role is responsible for the delivery of assets and solutions for South East Water at a project level. The purpose of this role is to lead projects and manage the design and construction of South East Water's assets in the water and wastewater networks, this includes new pipelines and structures to ensure customer service levels are maintained and growth is achieved. At a project Level the role manages the water, sewer and alternative water network growth Capital Works, including the engagement and approvals, setting of standards, the coordination and implementation of strategic plans to meet corporate business objectives, license requirements and government directives, and the delivery of these programs requiring a high degree of community relations and risk management

This role applies industry and South East Water standards to deliver critical infrastructure for the water industry. Ensuring safety in design and delivery is an essential component of this role.

## Key Accountabilities

Under direction from the Delivery Team Leader and Delivery Manager, the Project Engineer will:

- Be South East Water's Contract Representative administering the commercial contracts in place to ensure the highest levels of performance are achieved
- Assist in the compilation of detailed work scopes in liaison with South East Water stakeholders to ensure contract and commercial interests are protected
- Review designs and ensure projects are designed and delivered to the highest safety standards
- Provide input into the functional and detail design phases for projects, to ensure compliance with the intent of the project briefs, answering any technical or engineering queries raised
- Administer and maintain detailed project information, reporting on project costs, forecasting, claims assessment and final cost reporting
- Drive efficiency, on time program delivery, performance measurement and target development in collaboration with the contractors
- Monitor and audit construction of projects, raising awareness of defective workmanship to contractors and seeing through the rectification prior to completion
- Monitor and report on the contractor's performance against the agreed KPI's.



- Administer acceptance of works and handover to Customer Service Delivery (Operations and Maintenance teams).
- Provide support to and deputise for the Senior Project Engineer and Delivery Manager where required.

## Knowledge, Skills & Experience

The classification structure for this role has been designed to recognise multiple levels of experience in the engineering field (Levels three (3) to five (5)). Incumbents will commence in a classification according to their level of engineering experience and this will be determined prior to employment. From here, the incumbent's progression through the levels will be subject to SEW's engineering pathways structure.

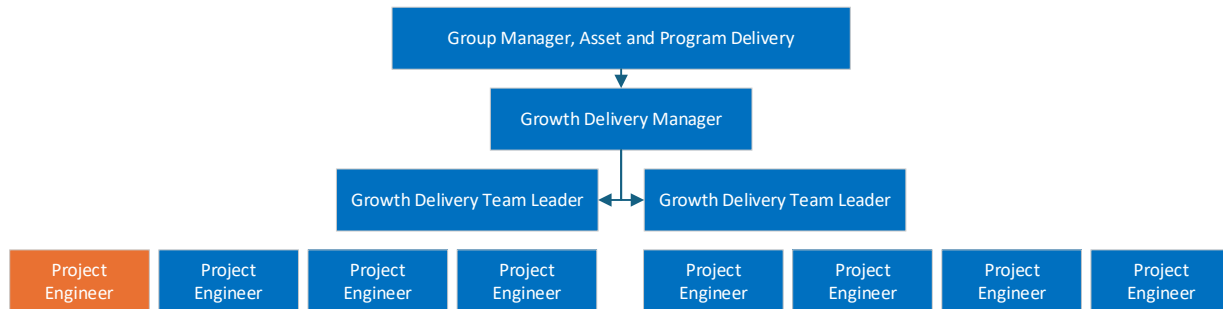
At a minimum on entry, the following knowledge, skills and experience is required

- Bachelor engineering qualification and significant experience in sewer and water infrastructure or a similar industry
- Chartered Professional Engineer (CPEng) as recognised by Engineers Australia (or international equivalent) preferred. As of 1 October 2022, Civil Engineers performing professional engineering services in Victoria are also required to be Registered with the Building Licencing Authority - Consumers Affairs Victoria. See the section at the end regarding registration.
- Knowledge of the relevant OHS codes, standards and legislation. Be a leader in establishing and maintaining a strong safety culture
- Demonstrated leadership, drive, initiative, creativity and a high level of personal motivation
- Experience in the delivery of water, sewer or treatment plant infrastructure preferred
- Demonstrated Project Management skills and an understanding of an infrastructure asset project lifecycle
- Clear customer focus when dealing with both internal and external stakeholders with demonstrated commitment to excellence
- High level of written and verbal communication skills
- Understand commercial contracts and be able to manage, formulate and track individual budgets
- Broad knowledge of standards and specifications, including relevant WSAA Codes necessary for the design and construction of South East Water's assets including knowledge of legislation related to the Water Industry
- Able to operate autonomously under limited supervision and direction, however also able to acknowledge key decisions to be referred to the relevant escalation point.
- Ability to understand the impacts of decisions on cost, other stakeholders and customers
- Good negotiation skills on matters such as contractors claims, variations and commercial disputes, refer to the relevant escalation point
- Understanding and appreciation of environmental issues relating to the design and construction water and sewer infrastructure



## Dimensions

### Organisational Chart



This position is for a role between a Level 3 and Level 5. The level will depend on the how well the selected candidate meets the above requirements for experience and skill and the candidate's capability to meet the accountability requirements shown above.

### Number of people managed:

None Directly. Indirectly there are two existing Consortia (Design and Construction Joint Ventures) and two new Consortia (integrated Planning and Delivery - Joint Ventures) as well as internal and external project stakeholders.

### Size of budget managed:

Capable of managing projects within the program and/or annual budgets in the order of Capex \$50 - \$80 million / annum.

### Value of Assets managed:

Responsible for delivery assets for the various planning teams. Completed assets are handed over to the operations and maintenance teams. Projects and hence assets individually valued between \$0.5 to \$20m.

### Ensuring a sustainable, resilient organisation:

Authorities outlined in [Instrument of Delegations](#) no

Compliance management responsibilities outlined in the [compliance and obligations register](#) none

As an Engineering position the role requires a Professional Engineer (accredited 4 year degree) and requires professional registration in Victoria (or at least working towards professional registration)

South East Water operates a 24/7 service environment. Whilst this role does not involve after-hours rostered duty, all employees may be required to provide out of hours support from time to time as required