



Position description

Position title	<i>Senior Technical Adviser (Mechanical & Civil) - Asset Integration</i>
Group / Branch	<i>Service Delivery/Asset Performance and Resilience</i>
Reports to (Title)	<i>Reports to Asset Integration Manager</i>
Competency level	<i>Individual Contributor</i>

Job Purpose

We help create a better world for our customers with forward-thinking water solutions, for all and always, that won't cost the earth. Our purpose of Healthy Water for Life means bringing our customers the clean water they want and safely managing the wastewater they don't. It also means thinking ahead and doing what we need to accomplish now so the generations to come can benefit in the future.

Asset Integration is a multi-faceted team which was created to collaborate with cross divisional stakeholders to provide technical and operational advice during the concept, design, construction, and commissioning and handover phases of new and refurbished assets.

The Senior Technical Advisor (Mechanical & Civil) will be responsible for commissioning and handover end-to-end process for mechanical plant and equipment. The advice will be required to be provided during planning, design and commissioning phases to assist the project team with integration of critical assets into new or existing networks. The provision of post-commissioning feedback on operation performance will be essential to allow for enhancement and improvement opportunities.

In addition, even though the role's primary focus is the mechanical element, civil, instrumentation and electrical aspects will feature significantly.

Key Accountabilities

- Establish and foster collaborative and trusting relationships with Maintenance, Network Operations, Planning, Delivery and Standards teams and industry and delivery partners with focus on delivering high quality assets;
- Provide expert technical advice during planning, design, construction, commissioning and integration phases of asset creation projects for mechanical and civil components, this will in some cases require hydraulic analysis of existing assets using asset information and research
- Engage with and coordinate technical input from key stakeholders throughout the entire asset creation project lifecycle (planning to commissioning). Key stakeholders will include Network and Treatment Operations, M&E Asset Services and Operational Technology (SCADA and Telemetry).



- Ensure the project team addresses the rectification of defects and issues are rectified as per agreed timelines to facilitate a smoother handover to Operations and Maintenance teams;
- Provide operational content and input to the project team to assist with the preparation of the commissioning plans and operation reference manuals
- Facilitate asset commissioning process and ensure it meets the functional design requirements and adheres to the commissioning plan especially in relation to mechanical and civil components.
- Ensure the new or upgraded asset complies with appropriate regulations and AS/NZS standards, industry MRWA standards, including documentation and sign off on agreed deviations, record and location of commissioning and integration checklists;
- Ensure all data and documentation are appropriately stored in a nominated depository (Asset Register, SCADA, GIS, Drawing Management System);
- Assist in training and education in operation and maintenance of new or upgraded assets.
- Assist in obtaining sign-off of the acceptance of new asset from the relevant teams;
- Identify and continuously drive implementation of improvements to existing processes and workflows;
- Ensure lessons learned and recommendations are captured in relevant workflows and systems through participating in post implementation and operational reviews to share learnings from projects;
- Liaison with other authorities and industry partners (e.g. WSAA) regarding best practices associated with asset management/integration techniques;
- Ensure safe work practices required by OH&S legislation and regulations, and South East Water policies and procedures by embedding a culture of safety awareness;
- Participate and promote a highly engaged working environment that is innovative, rewarding, collaborative and inclusive;
- This role may have the opportunity in the future to rotate through other Engineering positions throughout Service Delivery and South East Water.

Knowledge, Skills & Experience

- A Degree in Mechanical or Civil Engineering (highly desirable) or minimum 7 year post apprenticeship trade as Mechanical Engineering Technician Cert III or Mechanical commissioning engineer technician. Experience in the water industry is beneficial.
- Graduate Certificate/Diploma or previous experience in project management is an advantage.
- Strong knowledge of mechanical and civil principles and intermediate electrical and instrumentation design and PLC control knowledge is essential.
- Experience with hydraulic system is an advantage.
- Excellent interpersonal skills to aid building and maintaining collaborative and professional relationships with key stakeholders including senior management,

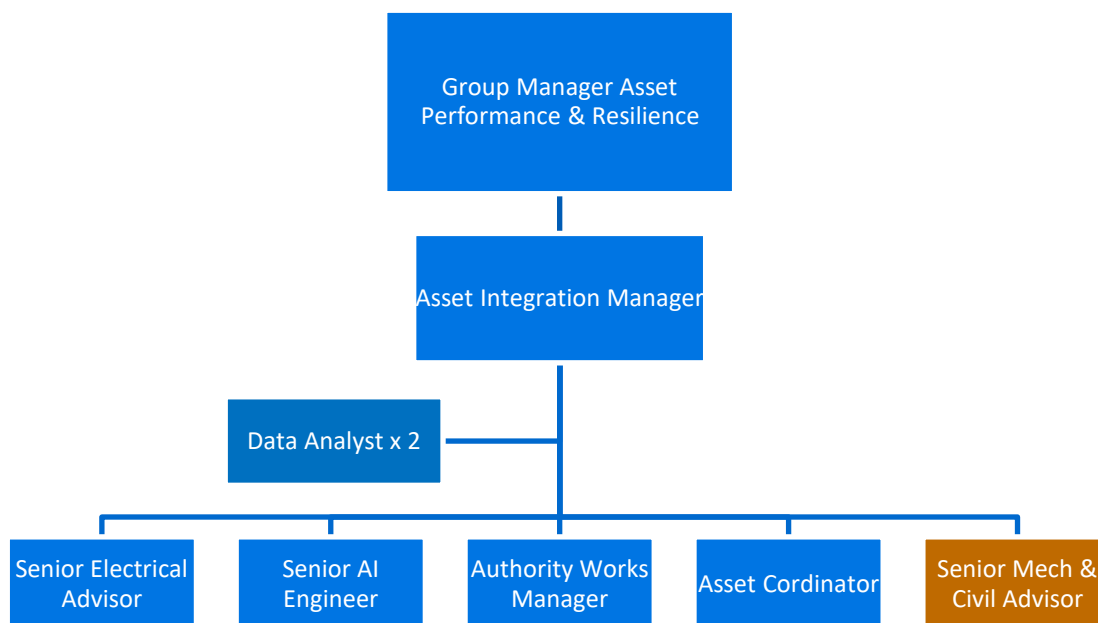


customers, consultants and contractors. Extensive knowledge of current mechanical standards and willingness to drive and/or influence creation of new or updating existing standards.

- Extensive knowledge and demonstrated competency in QA Principles, AS/NZS Standards, Codes (WSAA), Industry (MRWA) standards and applied practices;
- Good understanding of asset management philosophies and practices;
- Extensive experience and demonstrated competency in operating and maintaining water, recycled water and sewerage networks;
- Extensive experience and demonstrated competency in commissioning/handover of plant, water, recycled and sewer assets and equipment;
- Relevant experience and technical understanding of the water industry asset life cycle i.e. planning, design, construction, operations and maintenance;
- Highly developed strategic and analytical skills for reviewing work processes and procedures and be able to identify and implement improvements.
- Excellent verbal, written, negotiation and communication skills.
- Ability to discuss and relay complex technical issues to other parties.
- Excellent time management and prioritisation skills by being able to manage large volume of competing tasks.

Dimensions

Organisational Chart



Number of people managed:

Nil

**Size of budget managed:**

N/A

Value of Assets managed:

N/A

Ensuring a sustainable, resilient organisation:

Authorities outlined in [Instrument of Delegations](#) none

Compliance management responsibilities outlined in the [compliance and obligations register](#) none

South East Water operates a 24/7 service environment. Whilst this role does not involve after-hours rostered duty, all employees may be required to provide out of hours support from time to time as required.