



Position description

Position title	<i>WRP Operator – Peninsula/Westernport</i>
Group / Branch	<i>Treatment and Recovery Services / Service Delivery</i>
Reports to (Title)	<i>Manager WRP Operations / Team Leader / WRP Operator Integration – Peninsula/Westernport</i>
Competency level	<i>Individual Contributor</i>

Job Purpose

The WRP Operator (Peninsula or Westernport) will contribute to ensuring the safe operation of a number of South East Water's Water Recycling Plants (WRPs) to ensure EPA Licence conditions are met and the delivery of high quality products. The position has a major impact on the organisation as it is the frontline in managing complex assets on a 24/7 basis.

There is one team responsible for Westernport Water Recycling Plant (based at Pakenham WRP) and another for Peninsula WRPs (based at Mt Martha Water Recycling Plant). There is significant cross-over and collaboration between the teams with potential for rotations. Your job location may alter depending on conditions and workloads.

Key Accountabilities

- Maintaining and abiding by safe systems of work
- Ensuring that all actions undertaken are carried out safely and within the Occupational Health and Safety Act 2004
- Carrying out actions as agreed with your manager to ensure that the assigned plant complies with EPA Licence, Bulk Sewage Agreement (if applicable at the assigned plant) and any other regulators conditions.
- Ensure the WRPs has minimal impact in the local community by ensuring it does not generate complaints
- Carry out treatment operations in accordance with relevant quality requirements (e.g. HACCP, ISO 22001)
- Assist in detailed investigations, analyse and preparation of technical reports on treatment plant process improvements
- Perform hands-on tasks in support of South East Water's emergency response procedures and critical equipment failures when required
- Identification and monitoring of maintenance works at the assigned plant (plant personnel and contractors will perform this maintenance)
- Issue works and verify completion on South East Water's customer contact and works issue system
- On going training to participate in the out of hours roster as required
- Maintain good housekeeping at the assigned plants



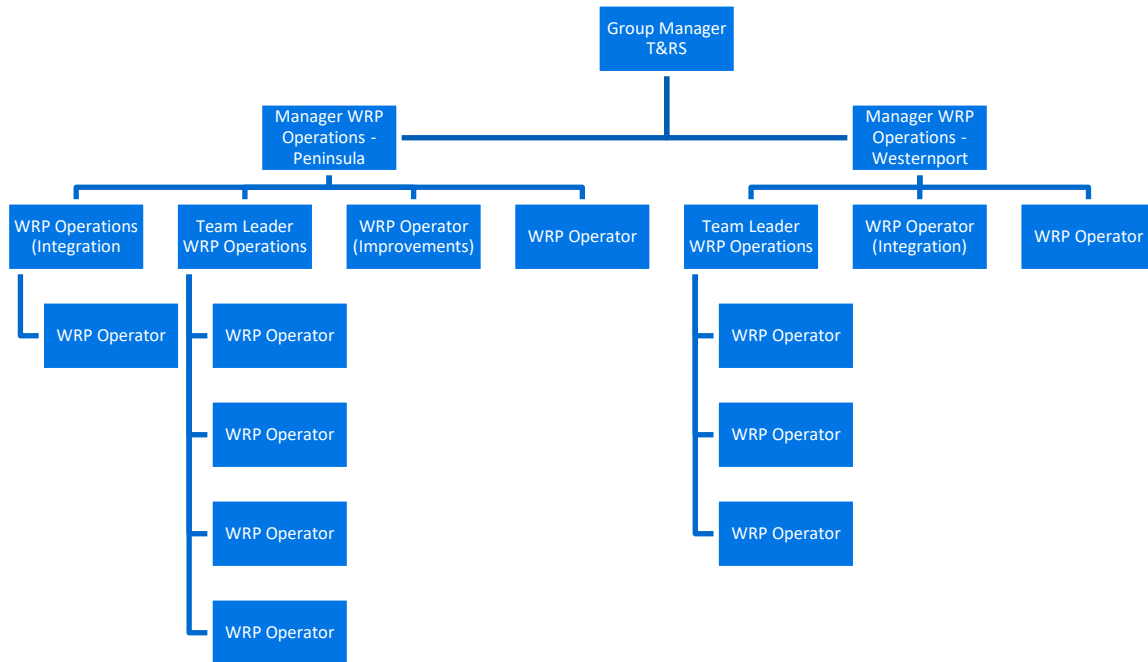
- Understand key performance indicators and the business impacts arising
- Understand the quality and environment policies, objectives and systems and their impact on the position
- Developing more efficient work practices
- Perform various hands-on tasks as required
- Perform laboratory testing to verify plant compliance
- Undertaking projects as required

Knowledge, Skills & Experience

- A history of safe working practice
- Successful completion of Victorian Certificate of Education (VCE) or equivalent.
- A degree in Chemical Engineering; Environmental Science or similar is desirable. Knowledge of treatment operations / processes desirable
- Familiarity with requirements of HACCP plans desirable
- Information technology and computer skills including Microsoft applications
- Strong communication skills to facilitate clear and concise interaction between customers, contractor, management, other and South East Water staff including written communications
- Strong interpersonal skills demonstrated through a proven ability to supervise and negotiate issues with contractors
- Strong problem solving skills, guided by experience, policy and procedure
- A willingness to undertake relevant training and courses
- High degree of flexibility and capacity to deal with change and uncertainty
- An ability to seek research and recommend opportunities for improvement
- Be proactive in responding to issues that require immediate action
- Broad knowledge of wastewater supply systems and the operational aspects associated with such systems
- Have sound mechanical / electrical aptitude or be willing to learn
- Demonstrated initiative to provide sound solutions and process improvement
- Ability to work autonomously and in an ambiguous environment.
- Proven history of being an effective team player within a diverse and multi-disciplinary team coupled with strong interpersonal skills
- Have good physical agility in outdoors work and willing to occasionally operate machinery such as forklifts, front end loaders and towing of trailers
- Hold a current Victorian driver's licence
- Support and participation in rotation, improvement and skill development programs

Dimensions

Organisational Chart



Number of people managed:

Nil

Size of budget managed:

Nil

Value of Assets managed:

The position is responsible for the day-to-day management of multi-million dollar WRPs which are required to be operated and maintained in an optimal, safe and reliable manner.

Ensuring a sustainable, resilient organisation:

Authorities outlined in [Instrument of Delegations](#) none

Compliance management responsibilities outlined in the [compliance and obligations register](#) none

As part of a team of engineers and technicians central to this role are responsibilities for 24/7 safe operation to provide support and minimise disruption of services to customers and as well as ensuring that public health and the environment are not put at risk. This includes participation in a rostered after-hours duty team, emergency response, and incident support as required.