

Boneo Water Recycling Plant

Project Update May 2024

We hope you all had a happy and safe Summer.

After nearly 6 years, the Boneo WRP Stage 4 upgrade delivered by the John Holland SUEZ Beca (JHSB) joint venture is close to completion. We are in the final stages of commissioning the treatment process, focussed on growing the bugs that help make the process as efficient as possible.

We have also started works on construction of the last asset to be delivered as part of the Plant's upgrade, the Emergency Storage Lagoon (ESL). The ESL is being delivered by another of South East Waters' industry partners - the Beca, Fulton Hogan, Interflow Joint Venture (BFHI).



Emergency Storage Lagoon to be upgraded

What does the ESL works involve?

The Boneo ESL project involves the repurposing of an existing sludge lagoon as a new emergency storage to help manage overflows and reduce spill risks. There will also be a new pump station and piping built on site. We anticipate the ESL will be completed in time for the 2024/25 summer period. Working hours will be Monday to Friday between 7am and 6pm, and Saturday works where required. We'll let the community know in advance if we need to work on Saturdays. There will be an increase in truck traffic on Limestone Road and Boneo Road while we work but we have developed plans to ensure that the impact on the local community is minimised.

WRP Operations Update

Now that the summer holiday peak has passed, when flows to the plant almost double, we have now returned to normal operation. The plant is operating as expected, with the focus on business as usual activities.

Need to get in touch?

We're here to help, so here's how to reach our team:

Plant Operations - Peter Segura (JHSB)

Phone: 0456 931 065

Email: peter.segura@suez.com

Emergency Storage Lagoon Upgrade – Project Team

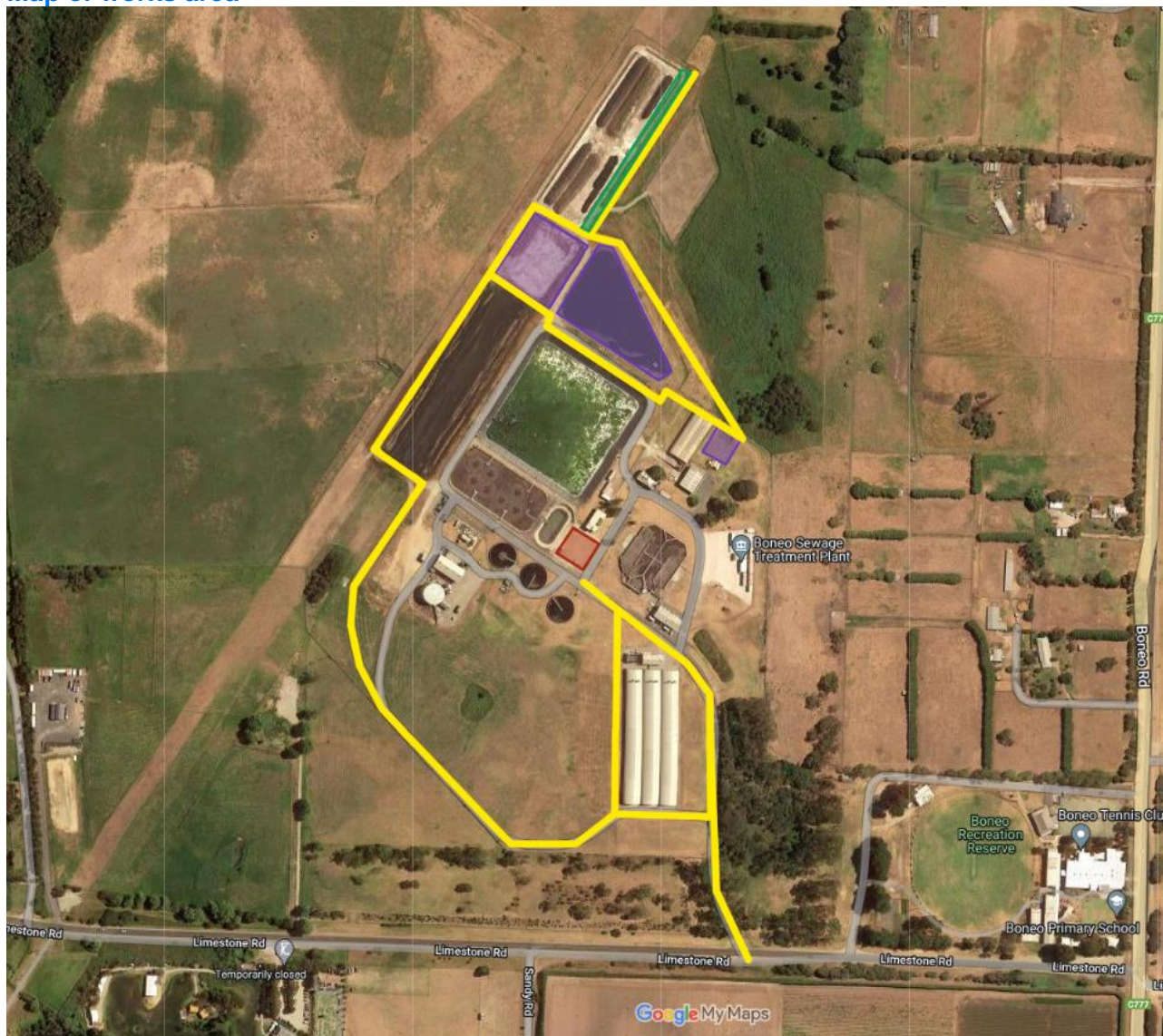
Phone: 1800 330 129

Email: boneo@sew.com.au

To subscribe/unsubscribe to the **mailing list** for updates on the Boneo WRP Upgrade please notify us on the details above.

Community updates are available on South East Water's website at the Boneo WRP Upgrade project page www.southeastwater.com.au/boneo

Map of works area



Permanent soil stockpile

Works area

Site office

Access route