

Project news

November 2023



South Melbourne Sewerage Capacity Upgrade Project - Stage One

You might not notice a lot of the work we do because most of it is beneath your feet. Every day, we're maintaining and upgrading the underground infrastructure that keeps water and wastewater services flowing.

The South Melbourne Sewerage Capacity Upgrade Project - Stage One is progressing towards its final stages.

We have completed the majority of connection work across the three worksites on the south side of Kings Way and are preparing to tunnel under Kings Way to connect to the sewer on the north side. The final phase of works will also include completing construction of permanent manholes and reinstatement works.

As key construction milestones have been reached across the project (more details overleaf), we have commenced a staged reduction of the worksite at the corner of Stead Street and Palmerston Crescent, which will continue over the coming weeks.

The project is planned to be completed by the end of this year.

We appreciate your patience as we undertake the final stages of works over the next few months.

We'll continue to work with you to minimise impacts wherever possible and keep you informed about upcoming works which may affect you.

We're here to help and you can reach our project team via email at engagement@sew.com.au or call 1800 728 256.

Key facts



347 metres of underground pipe has been laid



Up to 200 litres per second of sewage will flow through the new sewer alignment



Three permanent manholes will be constructed in the area



Over 1,500 cubic metres of ground material has been excavated to make way for the new sewer



Find out more

Scan the QR code or visit southeastwater.com.au/SMSC1 to find out more info about this project.



Project timeline

Mid 2022

- Preliminary works
- Site investigations
- Technical and engineering assessments

Late 2022

- Mobilisation and construction
- Further engineering investigations

Early 2023

- Underground construction continues

Mid 2023

- Mobilisation of Worksite Four

October 2023

- Complete critical works at Worksite Three to connect existing sewer to new alignment between Worksites One, Two and Three
- Commence staged demobilisation of Worksite Two
- Commence tunnelling from Worksite Four under Kings Way to create the new alignment connecting to Worksite Three

Late 2023*

- Complete construction of permanent manholes at Worksites One and Three
- Backfill temporary shaft at Worksite Four
- Final reinstatement to occur across all sites



Worksite One - Corner of Albert Rd & Stead St

Connection of the existing sewer to the new upgraded alignment is complete (see Connecting to the Past for more information about what this involved).

This has included some night works, and we're grateful to residents and businesses for your patience during this time.

The next step at this site is to construct the permanent manhole, which will involve backfilling the remainder of the temporary shaft, concreting works and road reinstatement works.

The permanent manhole allows ongoing access to the sewer for routine maintenance.

As works are completed at this location, the level of activity will reduce, however this worksite will remain until the project is completed, for final construction works and to house the site office.



The t-piece which facilitated connection of the old and new sewers.

Worksite Two - Corner of Stead St & Palmerston Cres

Construction of the permanent manhole is complete, which is the final milestone for major works required at this site.

We have commenced reducing the size of this site, including removing equipment, materials, acoustic barriers and some temporary fencing. A further section of Stead Street between Palmerston Crescent and Cobden Street has been returned, including additional parking spaces.

Road reinstatement works will be undertaken over the month of November, and once this is complete we will remove the worksite and return Stead Street and Palmerston Crescent to normal traffic and parking arrangements.

Some ad-hoc work will be undertaken at this location over coming months which will require some space at this site to be reclaimed for short timeframes, such as to access the shaft for final commissioning and live connection to the new sewer. We will endeavour to minimise the impacts of these works wherever possible, and get the job done as quickly as we can.

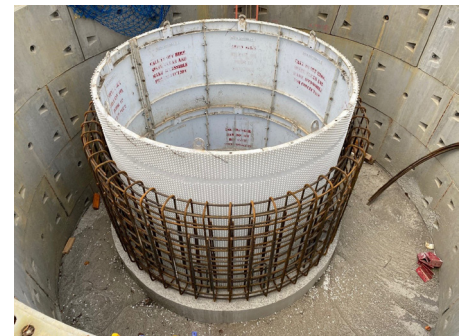
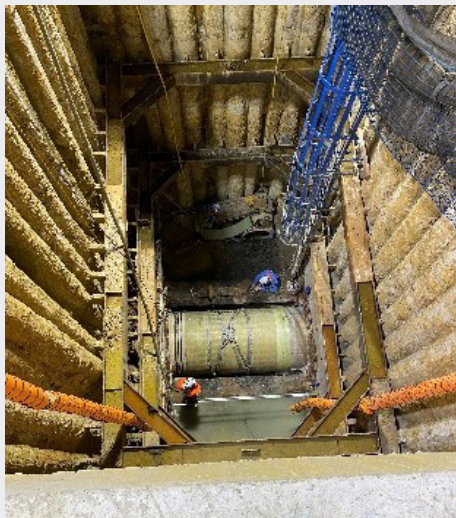
We understand there are a number of works in the area having a significant impact on people living and working in the vicinity, and we'd like to extend our sincere thanks for your ongoing patience with our project.

*Weather permitting and subject to safety, permit and technical requirements.



Connecting to the Past

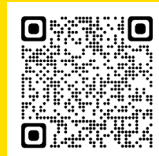
Did you know that the new sewer being constructed is tapping into an asset built more than 130 years ago? The existing South Yarra Main sits around 13 metres underground, is about 2 metres in diameter and made of bricks. The team had to access the historical sewer via a shaft created at the corner of Albert Road and Stead Street. The old sewer was connected to the new alignment by removing some of the existing brickwork and installing a fibre-reinforced polymer pipe. As this needed to be done under live sewer conditions, the works were undertaken overnight to ensure the lowest possible sewerage flow. South East Water's sewer and Melbourne Water's historical South Yarra Main are now working together to create a seamless flow!



Constructing the permanent manhole at Worksite Two.

Get project updates faster!

Update your email and mobile number so you're aware of major projects and possible service interruptions. Simply log in to [mySouthEastWater.com.au](https://www.mysoutheastwater.com.au) or call 13 16 94.



Worksite Three - Corner of Palmerston Cres & Kings Way Service Lane

Detailed hand tunnelling has been completed to expose the existing sewer (underneath Kings Way) and connect it to the new alignment that's been created between Worksite One, Two and Three.

Preparations are underway to create the new alignment which will travel underneath Kings Way and connect to the north side of Palmerston Crescent (Worksite Four).

Works include removing the existing alignment to make way for a new tunnel and pipes, and have recently involved some overnight works.

A tunnel boring machine (TBM) will be launched from Worksite Four, on the north side of Palmerston Crescent and Kings Way, and travel towards Worksite Three where it will be retrieved.

Once tunnelling is complete, construction of a permanent manhole at this location will commence.

This worksite will be required until the project is complete, which is expected to be by the end of the year.

Worksite Four - Corner of Kings Way & Palmerston Cres (north)

Since work began at this site in June, we have completed excavation of the temporary shaft to a final depth of around 10 metres.

This shaft supports the set-up of tunnelling equipment and will enable the TBM to be launched from Worksite Four, tunnelling under Kings Way to create a new, upgraded alignment to the sewer on the south side.

Tunnelling will commence in the coming weeks and take about two weeks. Once completed, the temporary shaft will be backfilled and the road will be reinstated. This is the final step in Stage One of the South Melbourne Sewerage Capacity Upgrade Project and is expected to be completed by the end of the year.



Excavating the shaft at Worksite Four.

What's next?

The South Melbourne Sewerage Capacity Upgrade - Stage One is being undertaken by South East Water as part of a wider program of upgrade works across the South Melbourne and Port Melbourne areas. For further details about this plan, visit s.sew.com.au/SouthMelbourneUpgrade.

Laying the foundations for future engineers

In June, Year 10 science students from MacRobertson Girl's High School visited the South Melbourne Sewerage Capacity Upgrade Project - Stage One worksites as part of their work experience with FHDB delivery partner Beca. The partnership between Beca and the school was established this year and aims to encourage more female students to choose STEM pathways through their higher education. Participants spent a week in Beca's Melbourne office, shadowing various teams within the business and participating in activities ranging from CV preparation to mock interview practice, a practical 'paper tower' engineering challenge and on-site visits to construction sites.

How to get in touch

Report a leak or check interruptions
mysupport.southeastwater.com.au/LIVE

Faults and emergencies 13 28 12 (24hrs)

Account enquiries 13 18 51
(8am – 6pm, Mon – Fri)

TTY users 13 36 77 (ask for 13 18 51)

Interpreter service

 **Languages other than English**
03 9280 0779

Jika Anda membutuhkan seorang juru bahasa, telepon 03 9280 0779

Εάν χρειάζεστε διερμηνέα, επικοινωνήστε με το 03 9280 0779

Follow us on socials for updates



Project contact

1800 728 256
engagement@sew.com.au
southeastwater.com.au