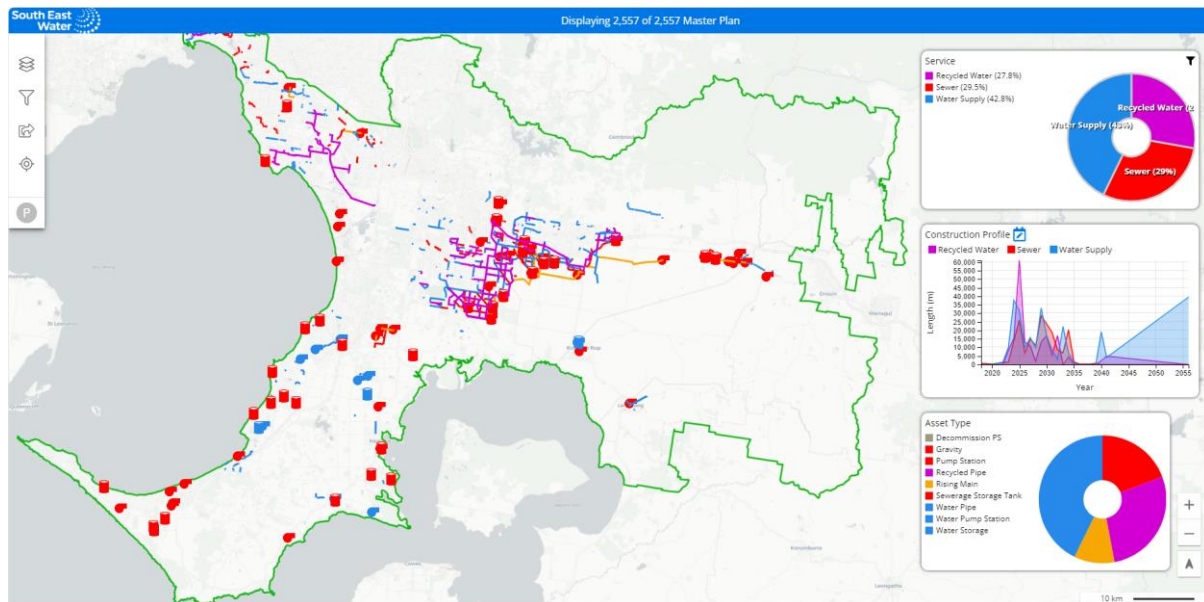


## How to guide

The South East Water Master Plan can be accessed by selecting the [Open application](#) button found here [Future infrastructure and Preliminary Servicing advice | South East Water](#) which will launch the following interactive map.



The interactive map will then open in a new web browser window. Once the Master Plan has launched the following functionality exists;

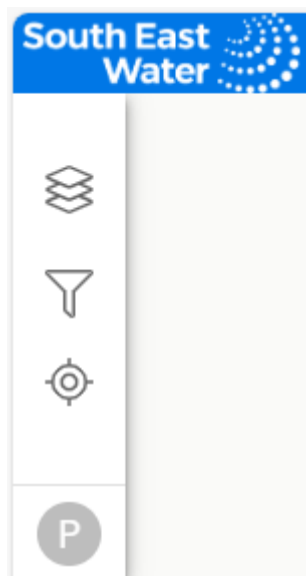
## What Information is available

- Users have the ability to display different layers / datasets / Information within the Infrastructure Master Plan to best align with their requirements, these datasets are inclusive of but not limited to.
  - Proposed infrastructure - Sewers, pump stations, rising mains, water pipes, water storage facilities & recycled water pipes
  - Existing infrastructure – Sewer, water and recycled water infrastructure
  - Boundaries – Sewer Catchment Areas, Water Distribution Zones, Urban Growth Boundary, Greenfield PSP's
  - Background layers – Aerial imagery & Basemaps of road and suburb infrastructure.

## Accessing and refining information

The following functionality exists to allow users to access and refine the information presented in the Infrastructure Master Plan to be tailored to their requirements. When the user performs any changes via the following functionality the Infrastructure Master Plan will automatically update.

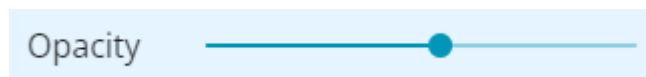
**Main Toolbar** - Located in the top left corner of the map screen



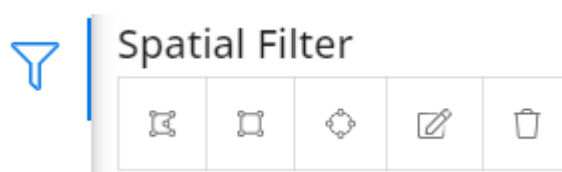
1. **Layer Tree** - To view the available dataset/s utilise the 'Layer Tree' tool



- To make a particular dataset/s visible select the 'Toggle Visibility' icon
- To change the opacity of the dataset/s a slide bar is located beneath each layer / data set



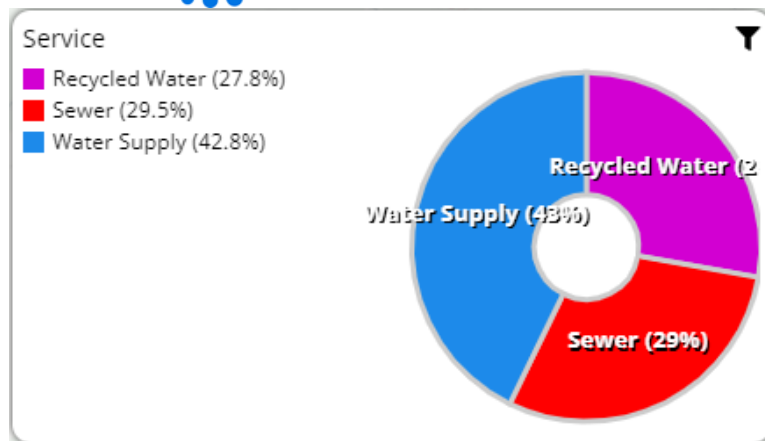
2. **Spatial Filter** - To filter / select a particular area of interest utilise the 'Spatial Filter' tool



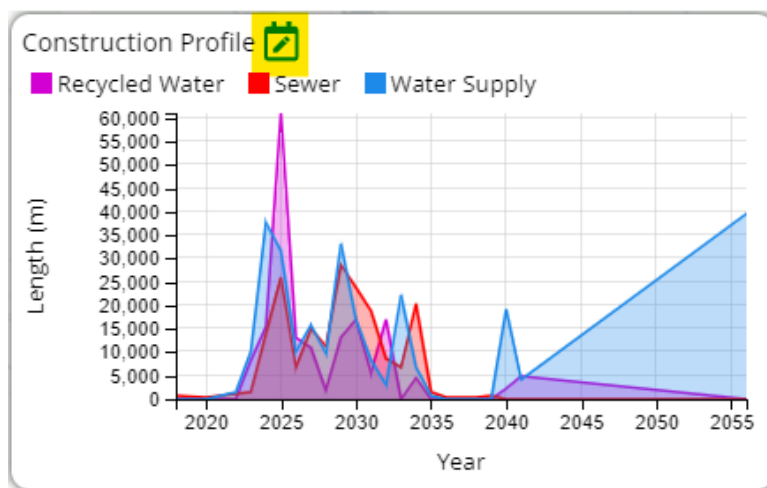
3. **Fit All** - To fit all features within the view window, utilise the 'Fit All' tool

**Map Filters** – Located to the right of the map screen

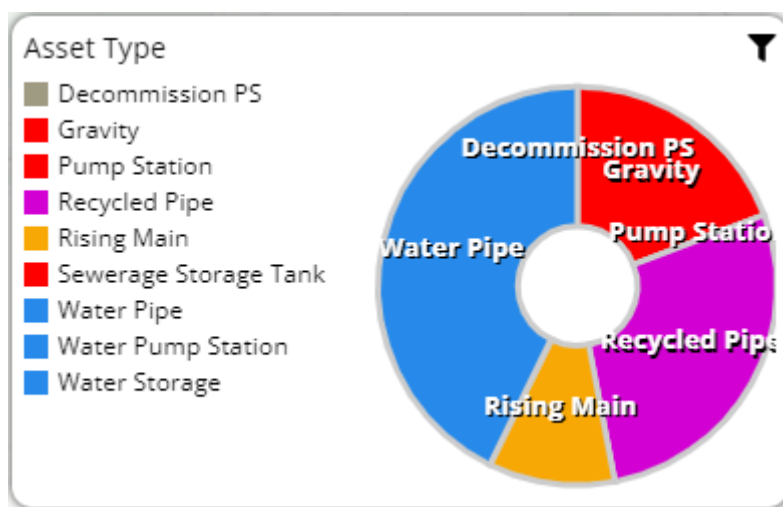
1. **Service filter**– Select the relevant items of interest in the Service table (top right corner)




- Construction Profile** (date) filter. Select the relevant dates of interest in the Construction Profile table (middle right) by selecting the icon highlighted below



- Asset type** filter– Select the relevant items of interest in the Asset type (bottom right corner)



- Filter clear - To clear any of the Map Filters select the 'Clear Filter' icon  which is located in the top right corner of each Map Filter window.

### For information on a particular asset / feature

1. For information on a particular asset / feature select the item of interest to obtain details such as
  - Service type
  - Asset Type
  - Planned date
  - Diameter
  - Length

