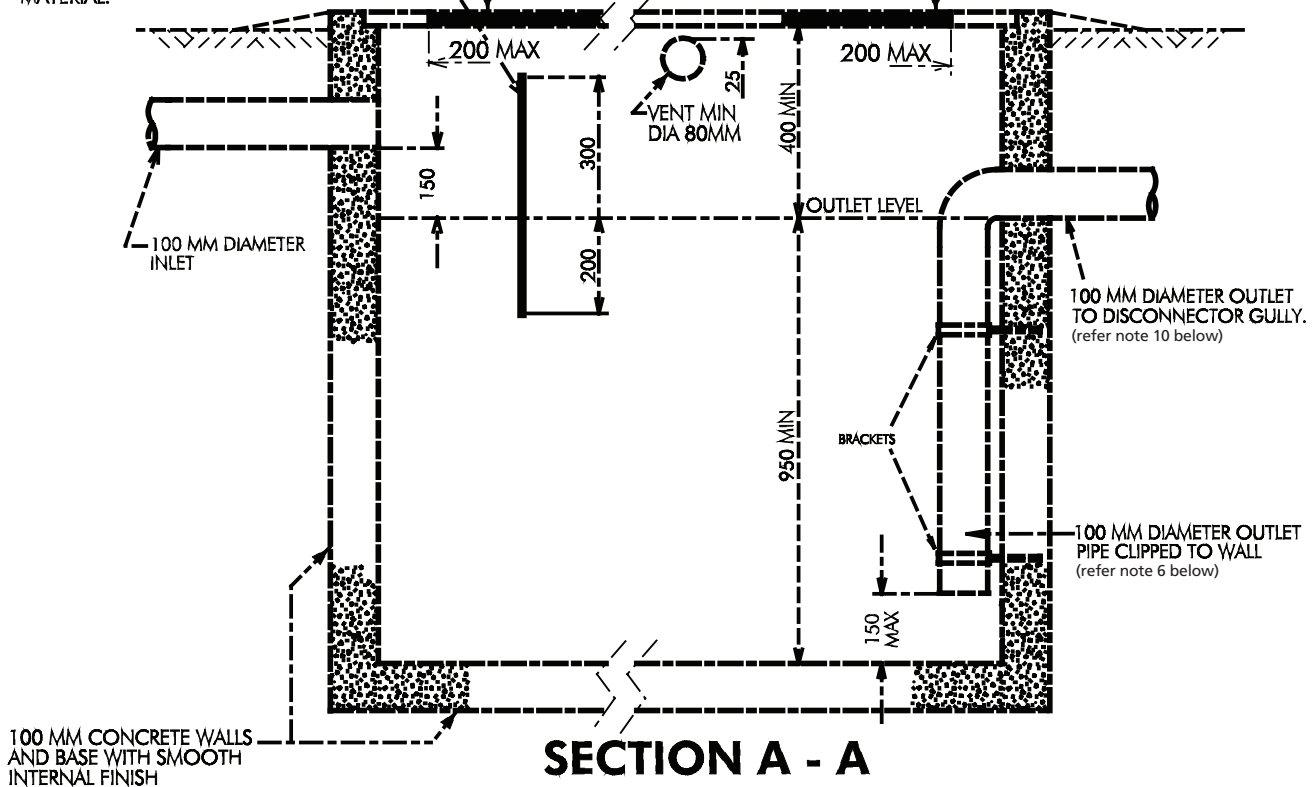


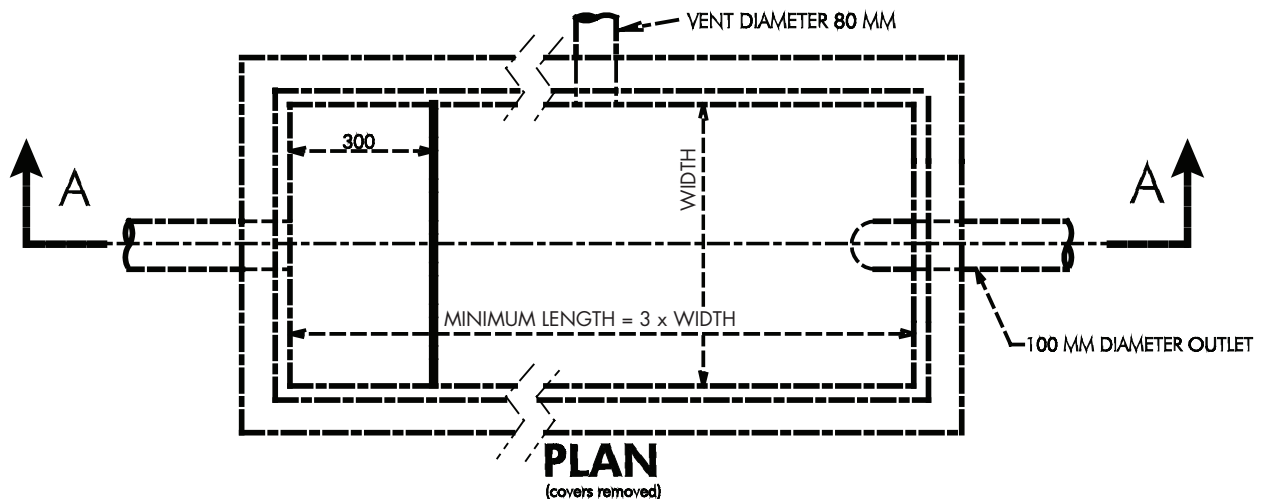
PERMANENTLY FIXED RIGID BAFFLE.
CONSTRUCTED FROM 6 MM (MIN)
MILD STEEL PLATE OR OTHER APPROVED
MATERIAL.

REFER NOTE 1 BELOW REGARDING COVERS

NOTE: GROUND VENTS ARE NOT PERMITTED



SECTION A - A



PLAN
(covers removed)

Notes:

1. Airtight covers are compulsory and of a suitable size to be readily removable by one person. A 600mm x 600mm or Ø600mm cover is required over the inlet and outlet of the pit.
2. Minimum water capacity of the interceptor below the invert of the outlet pipe is 1140 litres or as otherwise specified in the Trade Waste Contract.
3. The interceptor is to be constructed, installed and connected in accordance with the relevant plumbing regulations.
4. Where subject to traffic loadings, suitable covers capable of withstanding such loads shall be provided.
5. The vent is to be extended to open air in accordance with the relevant plumbing regulations.
6. The 100mm diameter outlet fitting is to be manufactured from approved material, preferably in one piece.
7. Polyvinyl chloride (PVC) **shall not be used** for the construction or venting of this unit.
8. This interceptor may accumulate quantities of explosive and/or inflammable materials and therefore care must be exercised in the maintenance and general use.
9. The interceptor must be located in a position so as to provide ready access for maintenance and inspection purposes.
10. Sealed disconnecter gullies must be vented. Disconnecter gully caps must be removable for sampling purposes.

<p>South East Water</p> <p>WatersEdge 101 Wells Street Frankston VIC 3199</p>	<h1>Petrol and Oil Interceptor</h1>	APPROVED: RENO CORELLI	DRAWING NO:
		DRAWN BY: MACINTOLOGY	AM 5
		SCALE: N.T.S.	DATE: 22/09/2015