



## Position description

<b>Position title</b>	Senior Integration Engineer
<b>Group / Branch</b>	Finance and Digital / Business Technology Services (BTS)
<b>Reports to (Title)</b>	Platform Lead
<b>Competency level</b>	<b>Individual Contributor</b>

## Job Purpose

The Business Technology Services branch is responsible for the delivery and support of Information Technology within South East Water and is aligned under South East Water's Sustainability strategy.

This position is responsible on the design, development and support of integration solutions, using primarily Azure technologies, but also with low code platforms such as Boomi.

This is a key role which can lead the design, development, and deployment of software applications, whilst also undertaking troubleshooting and operational support activities for integration solutions. The role also provides leadership and guidance to both internal and external stakeholders in relation to integration technologies, patterns and practices.

## Key Accountabilities

- Work with multiple stakeholder groups designing, developing, supporting, and enhancing integration solutions whilst working on several concurrent projects and work items simultaneously.
- Ensure integration solutions are performant, highly available, maintainable, monitored and secure.
- Design and present new integration patterns to the Architecture and Security Review Board for approval.
- Maintain in depth knowledge of current and emerging integration technologies within the Microsoft and Boomi ecosystems.
- Plan for the replacement or remediation of legacy integration solutions in consultation with the architecture team.
- Measure and optimize integration solution Opex costs.



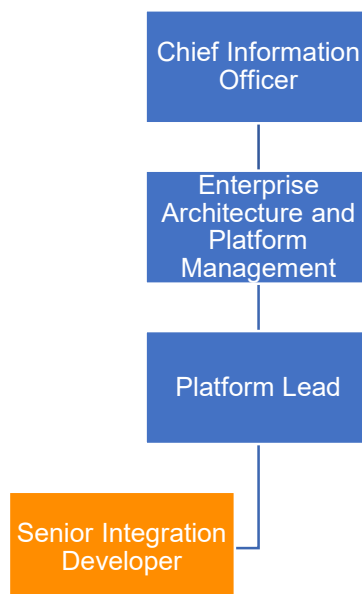
## Knowledge, Skills and Experience

Degree-level qualifications in Information Technology or related area are desirable. Related certifications are advantageous.

- 7+ years' experience in .NET, .NET Core 3+, C# and JavaScript/Typescript.
- In depth experience with JSON, XML, SOAP, REST and web services (Web API)
- 7+ years' experience in developing applications incorporating database components including MS-SQL, Azure SQL and Oracle.
- Exposure to Azure Data Factory desirable.
- Experience and knowledge in software development practices including SDLC, waterfall and Agile (SAFe, Scrum and Kanban)
- Experience using Agile tools such as JIRA & Confluence.
- Experience with systems integration, messaging, XML and JSON
- Good analytical and problem-solving skills with the initiative to proactively resolve issues
- Experience in code management and source code branching using Git, GitHub and Azure DevOps pipelines and CI\CD.
- Exposure to integration services such as; ESB, APIs, Boomi (or willingness to learn), Azure Function and Logic apps Azure Service Bus, Azure API Management (APIM), including policy development. Tibco exposure or willingness to learn.
- Experience with multiple forms of authentication/authorisation such as OAuth2, Entra, JWT, OpenID
- Experience working in a utilities background with a good domain knowledge would be preferred.
- Experience of working on integration solutions with a Customer and Property management System (e.g. Salesforce), and Asset Management Solution (e.g. Maximo) would be valued.

## Dimensions

### Organisational Chart



**Number of people managed:**

No direct reports.

**Size of budget managed:**

N/A

**Value of Assets managed:**

N/A

**Ensuring a sustainable, resilient organisation:**

Authorities outlined in [Instrument of Delegations](#) none

Compliance management responsibilities outlined in the [compliance and obligations register](#) none

South East Water operates a 24/7 service environment. Whilst this role does not involve after-hours rostered duty, all employees may be required to provide out of hours support from time to time as required.