

Position description

Position title	<i>Reliability Planning Engineer</i>
Group / Branch	<i>Liveable Water Solutions / Distribution Solutions</i>
Reports to (Title)	<i>Reliability Planning Manager</i>
Competency level	<i>Individual Contributor</i>

Job Purpose

The purpose of this position is to plan projects focused on asset reliability to target elimination of failure risks, and ensure deteriorating assets are renewed in an optimal manner balancing capital investment, customer and environmental outcomes, consistent with South East Water's operating license, strategic priorities, Corporate Plan and Price Submission. The position is responsible the development of master plans, the pricing submission, regional strategies, planning investigations and hydraulic models.

This includes working with our integrated planning branch who will take to concept work to business case, functional design and beyond to capital delivery teams and partners to ensure quality projects are delivered on time and budget.

The objective of this role is to ensure the safe, timely and efficient delivery of infrastructure assets on the South East Water capital program by taking projects from inception to handover through engagement with internal and external stakeholders. This role is important to ensure industry and South East Water standards are applied to deliver critical infrastructure for the water industry. Ensuring safety in design and delivery is an essential component of this role.

Key Accountabilities

- Preparing Asset Management (reliability) plans for the water, recycled water and sewer network assets including reviewing and updating these plans as part of the annual Corporate planning process. This is important to ensure that the South East Water is investing in a manner which is efficient and effective in meeting agreed performance standards.
- Contribute to development and maintenance of a risk based asset renewal strategy for the water, recycled and sewer networks in compliance with ISO55001.
- Development of asset risk profile by applying a consistent likelihood of failure framework, and asset criticality framework. Establish asset risk models that clearly capture gross asset risk, current and planned risk control and risk treatment to effectively manage asset failure risks to an acceptable residual level. Alignment with South East Water corporate asset register and risk framework.
- Work with the organisation to accurately capture and display asset risk data and planned asset solutions in South East Water's Asset Information Systems.

- Determine the scope and timing of water, recycled water and sewer network asset renewal works for inclusion in South East Water's Corporate Plan and Price Submission.
- Evaluate risk mitigation options, and prioritise capital investment based on risk, and value engineering.
- Ensure appropriate consultation with internal and external stakeholders occurs during the planning phase of projects and programs so that unity exists across the organisation prior to implementation.
- Undertake risk assessment of assets and develop strategies for capital and maintenance programs to maintain reliable assets on a whole of life basis.
- Predicting future reliability requirements based on an optimum mix of activities to ensure adequate system performance to meet business KPI's.
- Assist with the development of robust databases for Asset Management Reliability planning purposes.
- Coordinate with other Branches and sections to ensure complete hydraulic service asset reliability plans are developed.
- Manage South East Water involvement in asset management reliability R&D projects.
- Undertake analysis of asset failures and performance
- Provide leadership in ensuring ongoing adherence to and updates of asset lifecycle management plans
- Keeping abreast and sharing the latest development in engineering technologies relevant to the water industry, particularly associated with condition assessment and corrosion
- Provision of advice to design and construction project managers, contribute to the development and improvement of data management systems to meet asset reliability needs
- Maintain sufficient understanding of other discipline requirements (including technical developments in these disciplines) by working closely with other disciplines as they apply to civil assets and to ensure that the requirements of these other disciplines can be accommodated in reliability asset management planning
- Engaging and making the position contribute to the development of asset management across the organisation
- Work with design consultants and capital delivery partners by:
 - Preparing scopes of work and RFQs for new works
 - Obtaining business case approvals
 - Providing process engineering expertise throughout the design and delivery phase of capital works
 - Assessing performance of new assets as part of commissioning
- Provide technical expertise to assist our operation teams.
- Undertake other activities, as directed.

Knowledge, Skills & Experience

The classification structure for this role has been designed to recognise multiple levels of experience in the engineering field (Levels three (3) to five (5)). Incumbents will commence in a classification according to their level of engineering experience and this will be determined prior to employment. From here, the incumbent's progression through the levels will be subject to SEW's engineering pathways structure.

At a minimum on entry, the following knowledge, skills and experience is required:

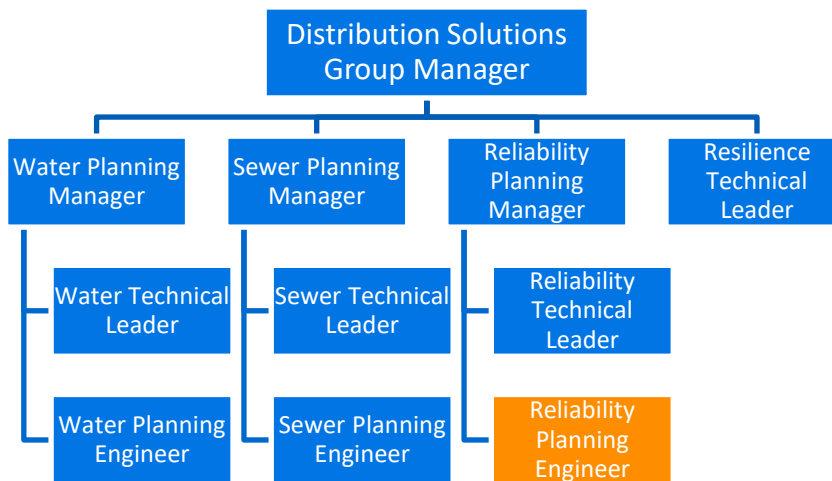
- Bachelor degree in Engineering is desirable or similar qualification and relevant work experience
- Professional Registration in Victoria desirable but not essential
- Minimum of 3 years' experience in infrastructure planning
- Experience in the delivery of water and sewerage infrastructure preferred
- Knowledge of Asset Management Principles as they relate to reliability of pipelines, sewers and other water industry engineering assets
- Ability to exercise independent professional judgement in recognising and solving problems relying on experience/policies/procedures; expanding, and adapting those policies and procedures if required
- Knowledge of risk management systems
- Construction, maintenance or operating experience or knowledge related to water industry engineering activities
- Demonstrated or significant experience and knowledge in asset management is needed for this role
- Ability to undertake complex technical and analytical work under limited supervision and direction and provide technical mentoring and leadership to other members of the team
- Knowledge of process modeling and simulation tools and experience using these tools to plan and/or optimise water and sewerage network processes (desirable, not essential)
- Ability to work and collaborate successfully as part of a broader team, especially across multiple SEW business units, to achieve the best customer outcomes for South East Water
- Sound understanding of policy, regulations and standards that govern the environmental, safety and product quality aspects of treatment plants
- Highly organised, with experience in project and program management
- Clear customer focus when dealing with both internal and external stakeholders, with demonstrated commitment to excellence
- Ability to write clear, unambiguous technical reports, business cases, project briefs, board papers, workshop reports, meeting minutes
- High level of verbal communication skills to inform, influence and exchange knowledge in a variety of settings.

More senior roles (Level 4 and above) will require:

- Ability to undertake complex technical and analytical work under limited supervision and direction and provide technical mentoring and leadership to other members of the team
- Ability to lead project teams by influencing stakeholders and delivery partners to ensure the best project outcome is achieved

Dimensions

Organisational Chart



Number of people managed:

0 direct reports

Size of budget managed:

No budget line responsibility, but individual project budgets of up to \$500k to be effectively managed

Value of Assets managed:

This role is responsible for providing technical advice on the water, recycled water and sewer network and making recommendations on business cases. Work is done in relatively close contact with manager. Authority to approve expenditure is as detailed in the Financial Schedule of Delegated Authorities

Ensuring a sustainable, resilient organisation:

Authorities outlined in [Instrument of Delegations](#) none

Compliance management responsibilities outlined in the [compliance and obligations register](#) yes
- operational responsibilities

For Engineering roles the role requires a Professional Engineer (accredited 4 year degree) not requiring professional registration in Victoria

South East Water operates a 24/7 service environment. Whilst this role does not involve after-hours rostered duty, all employees may be required to provide out of hours support from time to time as required.