

Position description

Position title	<i>Pressure Sewer Project Engineer</i>
Group / Branch	<i>Liveable Water Solutions Pressure Sewer Connections</i>
Reports to (Title)	<i>Pressure Sewer Connections Lead</i>
Competency level	<i>Individual Contributor</i>

Job Purpose

The Pressure Sewer Project Engineer will contribute to the success of the business by providing expert advice and knowledge to residents in installations of Pressure Sewer Systems (PSS). This will be achieved by ensuring that the coordinating of PSS schemes from septic sewer installations are carried out in accordance with applicable standards, quality assurance principles, business plans and South East Waters' corporate objectives.

Also support the management of the contractors, including monitoring and auditing the standard of work (during and after installation), and ensuring all works relating to Pressure Sewer Installations are delivered safely with safety being our highest priority. There is also scope to identify opportunities for efficiencies in delivering the installations for better customer, contractor and SEW outcomes.

Key Accountabilities

Quality and compliance

- Be South East Water's Project Representative administering the commercial contracts for the allocated projects in place to ensure the highest levels of performance are achieved.
- Ensuring all works are completed in line with applicable design plans, specifications, standards, practices, procedures and policies of South East Water and customer requirements.
- Administer and maintain detailed project information, reporting on project costs, forecasting, claims assessment and final cost reporting.
- Drive efficiency, on time program delivery, performance measurement and target development in collaboration with the contractors.
- Monitor and report on the contractor's performance against the agreed KPI's.
- Review designs and ensure projects are designed and delivered to the highest safety standards.
- Monitor and audit construction of projects, raising awareness of defective workmanship to contractors and seeing through the rectification prior to completion.
- Monitor and maintain safety of site compound and the Connections Yard, ensure that safe work practices, South East Waters 'Living Safely Rules' are adhered to at all times.

- Attend site visits and carry out any inspections relevant to work undertaken, OH&S audits, Quality audits and to provide solutions and guidance for installations.
- Assist in the compilation of detailed work scopes in liaison with South East Water customer/stakeholders to ensure contract and commercial interests are protected.
- Ensuring satisfaction of our customers and manage and resolve issues or complaints with the contractors.
- Provide support to and deputise for the Pressure Sewer Connections Lead and Delivery Manager where required.

Knowledge, Skills & Experience

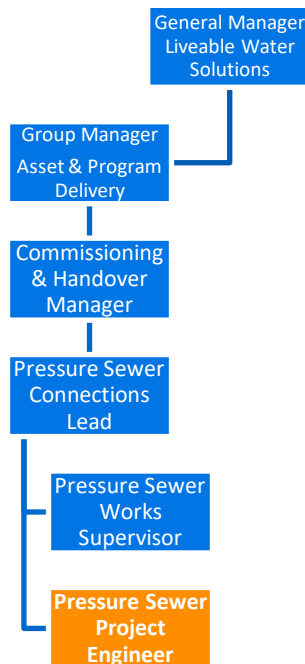
The classification structure for this role has been designed to recognise multiple levels of experience in the engineering field (Levels three (3) to five (5)). Incumbents will commence in a classification according to their level of engineering experience and this will be determined prior to employment. From here, the incumbent's progression through the levels will be subject to SEW's engineering pathways structure.

At a minimum on entry, the following knowledge, skills and experience is required

- Bachelor of engineering qualification and significant experience in sewer and water infrastructure or a similar industry.
- Chartered Professional Engineer (CPEng) as recognised by Engineers Australia (or international equivalent) preferred or working towards. As of 1 October 2022, Civil Engineers performing professional engineering services in Victoria are also required to be Registered with the Building Licencing Authority - Consumers Affairs Victoria.
- Knowledge of the relevant OHS codes, standards and legislation. Be a leader in establishing and maintaining a strong safety culture.
- Demonstrated, drive, initiative, creativity and a high level of personal motivation.
- Broad technical knowledge of Pressure Sewer Systems both on property assets and network assets.
- Demonstrated Project Management skills and an understanding of an infrastructure asset project lifecycle, likely gained through experience in design and/or planning.
- Clear customer focus when dealing with both internal and external stakeholders with demonstrated commitment to excellence.
- High level of written and verbal communication skills.
- Understand commercial contracts and be able to manage, formulate and track individual budgets.
- Broad knowledge of standards and specifications, including relevant WSAA Codes necessary for the design and construction of South East Water's assets including knowledge of legislation related to the Water Industry.
- Able to operate autonomously under limited supervision and direction, however also able to acknowledge key decisions to be referred to the relevant escalation point.
- Ability to understand the impacts of decisions on cost, other stakeholders and customers.
- Good negotiation skills on matters such as contractors' claims, variations and commercial disputes, and refer to the relevant escalation point when required.
- Understanding and appreciation of environmental issues relating to the design and construction of infrastructure.

Dimensions

Organisational Chart



Number of people managed:

None directly. Indirectly there will be contractors as well as internal and external project stakeholders.

Size of budget managed:

Capable of managing multiple projects within the program and/or annual budgets in the order of Capex \$5 - \$10 million.

Value of Assets managed:

Responsible for delivery of assets for the various planning streams. Completed assets are handed over to the operations and maintenance teams.

Ensuring a sustainable, resilient organisation:

Authorities outlined in [Instrument of Delegations](#) none

Compliance management responsibilities outlined in the [compliance and obligations register](#) none

For Engineering roles the role requires a Professional Engineer (accredited 4 year degree) and requires professional registration in Victoria or working towards registration

South East Water operates a 24/7 service environment. Whilst this role does not involve after-hours rostered duty, all employees may be required to provide out of hours support from time to time as required.

